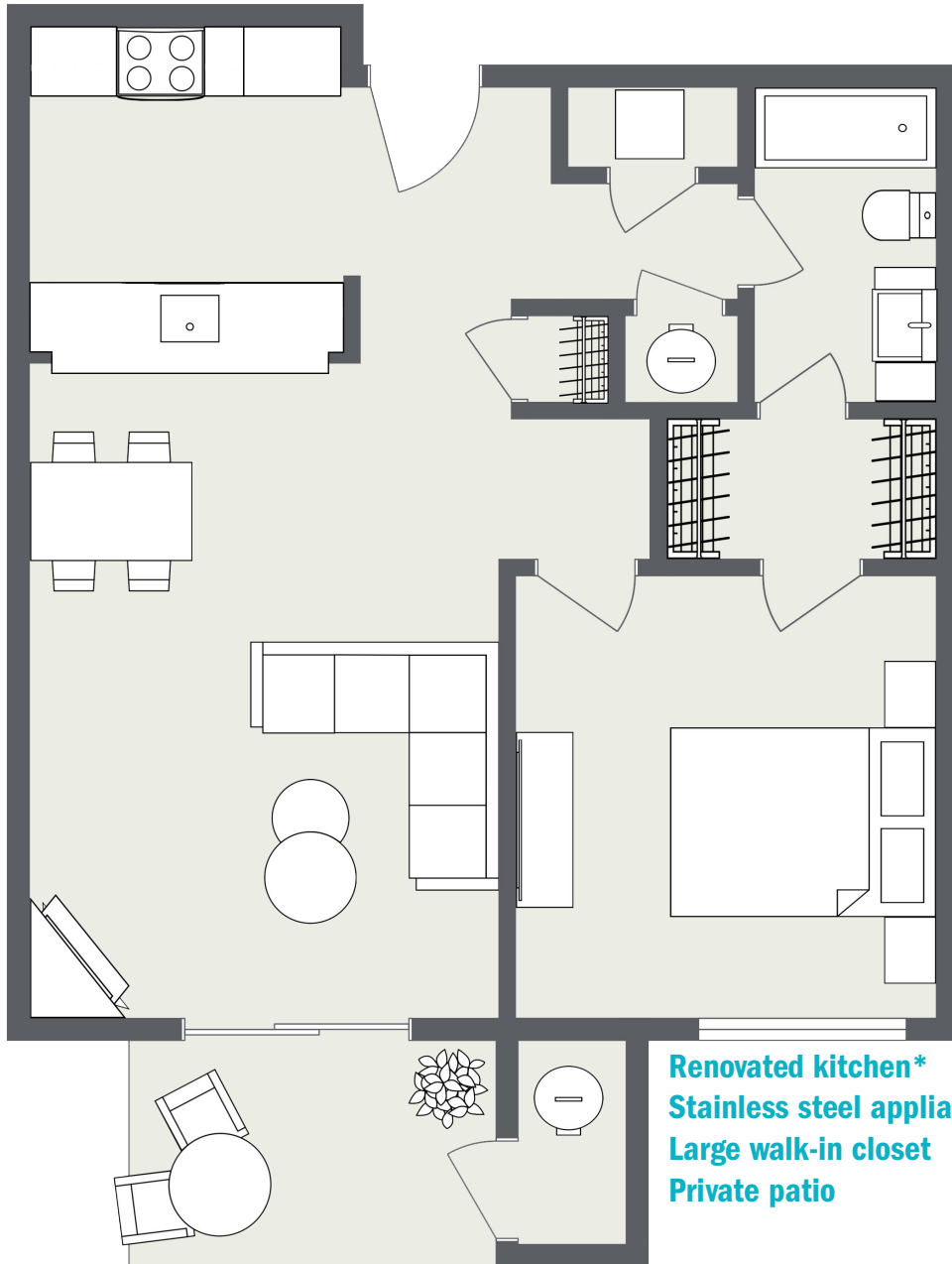


# SCUPPER + GARAGE

One Bedroom • One Bath  
596 Square Feet • \$ \_\_\_\_\_



Renovated kitchen\*  
Stainless steel appliances\*  
Large walk-in closet  
Private patio



## Harbor Pointe

500 Harbor Pointe Parkway Sandy Springs, GA 30350 | [GSCapt.com/HP](http://GSCapt.com/HP)



\*Actual finishes and features may vary. Dimensions and square footage shown are approximate and pricing/availability is subject to change.

