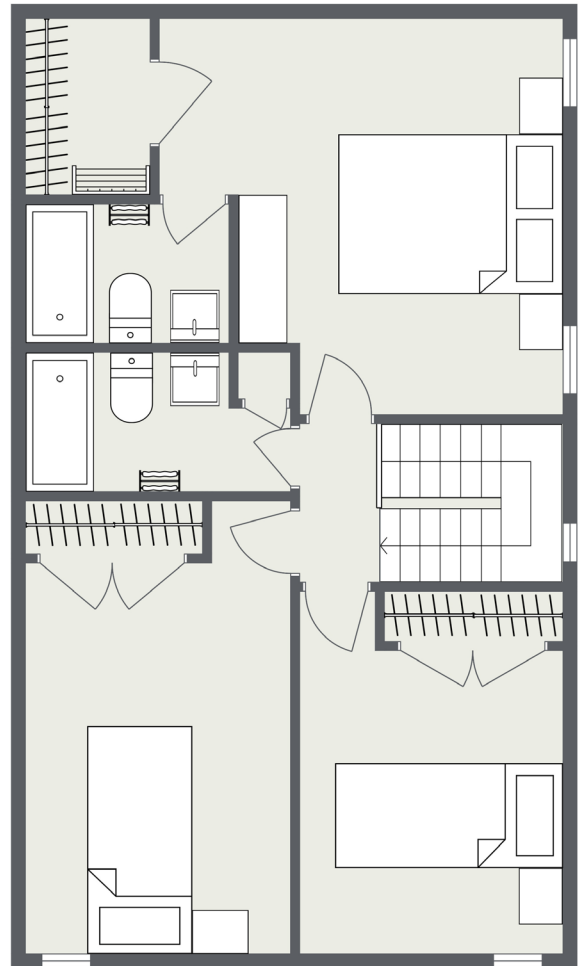
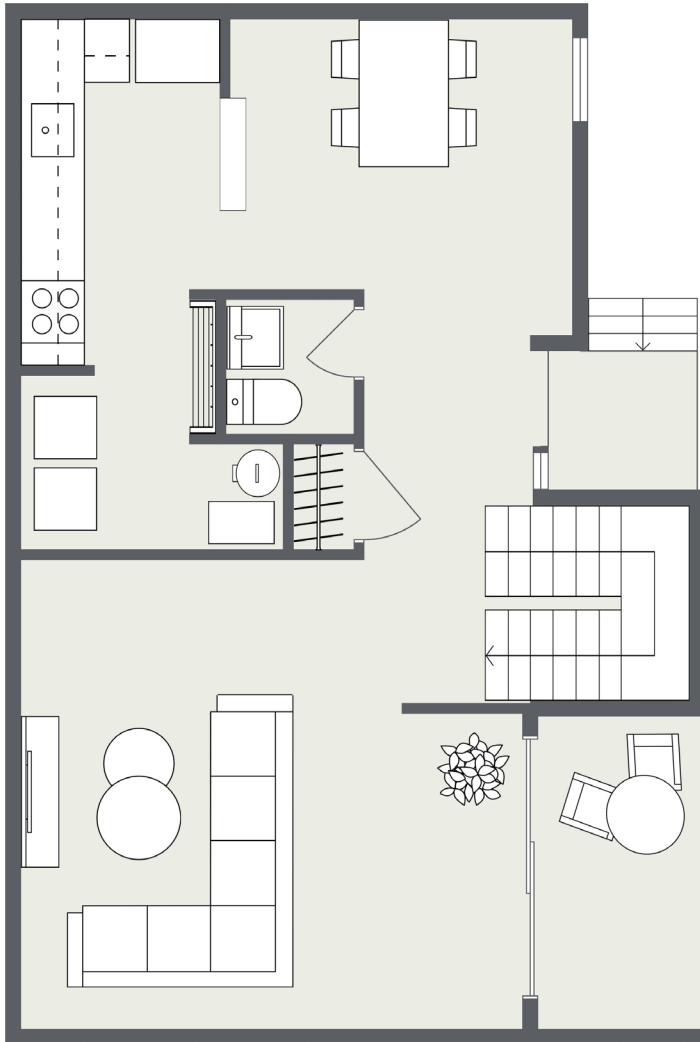


EUSTON

Three Bedrooms • Two One-half Baths
1270 Square Feet • \$ _____



Renovated kitchen
Stainless steel appliances
Washer/dryer included
Patio included



St. JOHN'S WOOD

901 St. John's Wood Drive Richmond, VA 23225 | GSCapt.com/SJW



This floor plan and the dimensions shown are approximations. Exact layout and square footage may vary. Sizes and specifications subject to change without notice.

